

Vaala
municipality



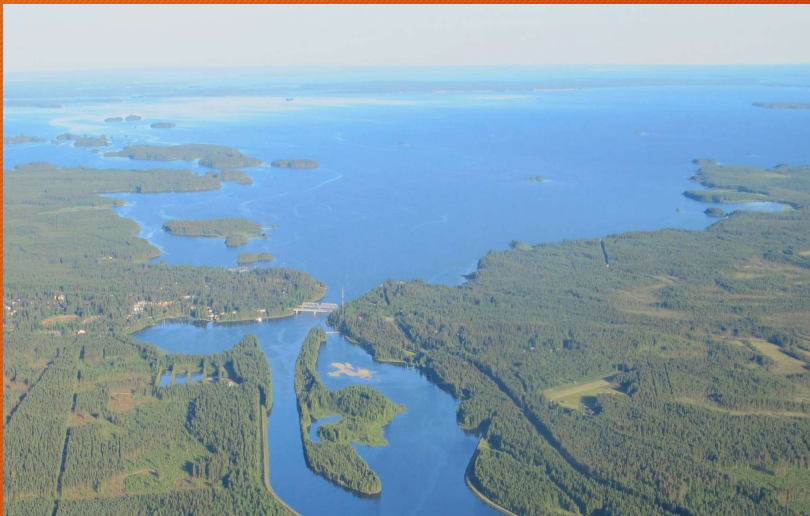
Geography

- Vaala is located in the middle of Finland
- Neighbouring municipalities:
Kajaani, Paltamo, Muhos, Puolanka,
Utajärvi, Liminka, Siikalatva



Lake Oulujärvi and the River Oulujoki

Oulujärvi is the fourth largest lake in Finland.



The centre is located at the starting point of the River Oulujoki.



Power plants

- There are eight power plants by the River Oulujoki.

Jylhämä power plant is one of them.



Mires cover 60 % of the area of Finland

Tolkansuo mire in the spring.

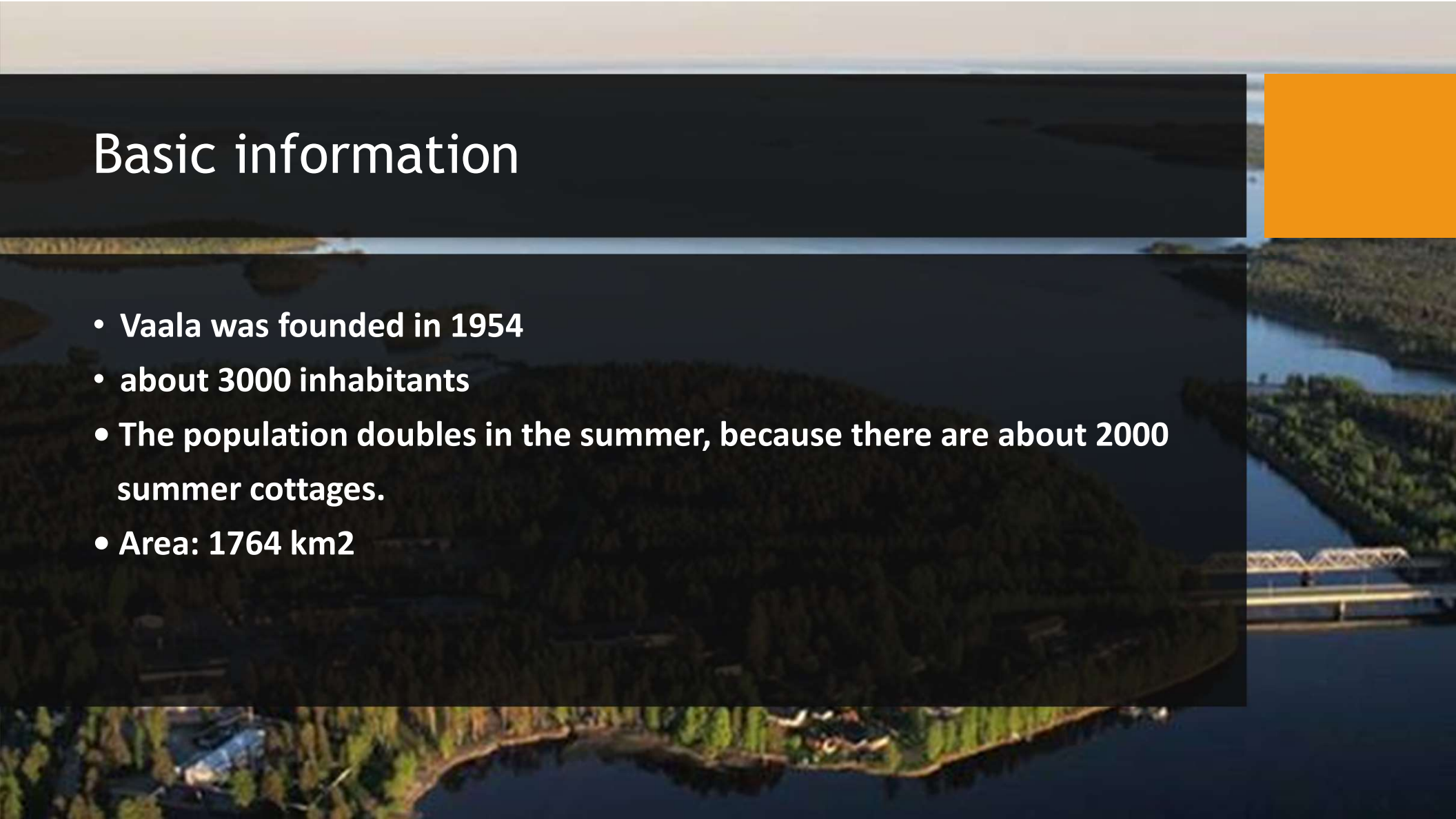


Pirtilammen neva mire in the autumn.



Basic information

- **Vaala was founded in 1954**
- **about 3000 inhabitants**
- **The population doubles in the summer, because there are about 2000 summer cottages.**
- **Area: 1764 km²**



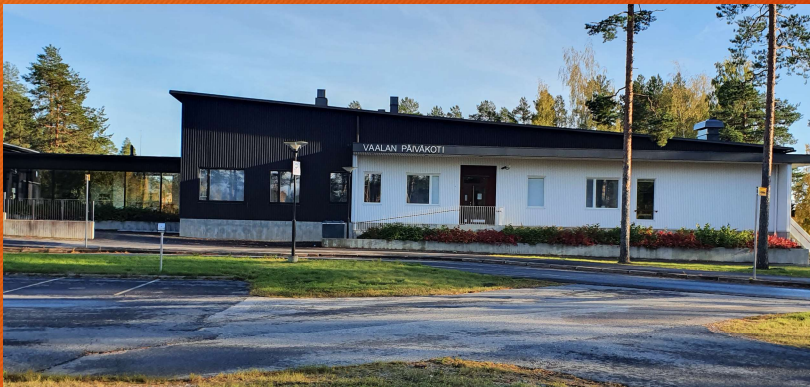
Municipality hall



Mayor Miira Raiskila



Day nursery



School center



The brand-new service station ABC



Skiing and shooting center



Sources of livelihood

The biggest employers:

- Pelso prison
- Vaala municipality
- Vaalan juustola (cheese factory)
- Vaalan betoni (concrete factory)

Primary industries:

- Services
- Agriculture



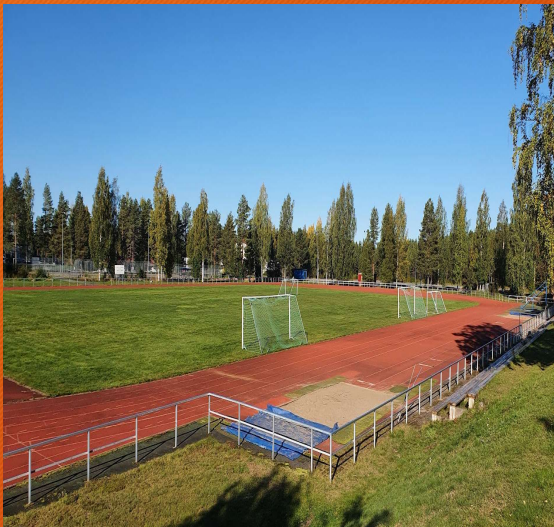
Picture: Vaalan juustola

Pelso prison; the old one and the construction site of the new Vaalan vankila



Leisure activities

Sports ground



Sahanranta beach



Sahanranta harbour



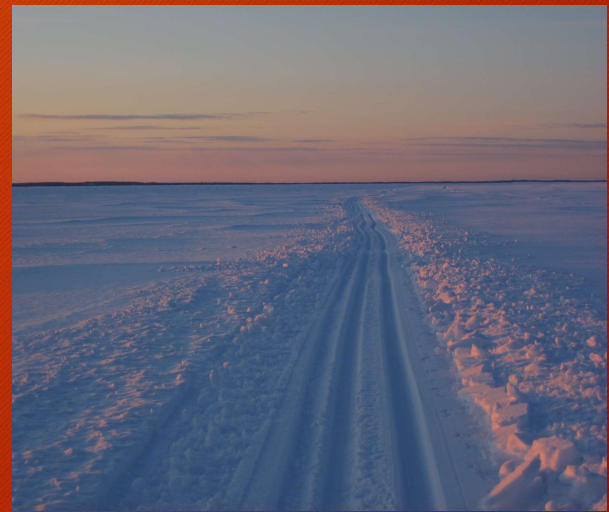
Canoeing



Fishing



Skiing



Snowmobiling and icefishing



Outdoor winter swimming



Frisbeegolf



Sights

- Lamminaho Farm
- Säräisniemi church
- Manamansalo monumental church
- Säräisniemi museum

Manamansalo island

The archaic gneiss deposit



Manamansalo monument church



Lamminaho farm was a popular accomodation for fishermen and tar traders.





Säräisniemi church



Made by Annukka Leinonen, Niko-Petteri Nousiainen, Petra Lämsä, Jenni Koistinen, Veera Mäkelä

Pictures Vaalan lukio, Mikko Kiuttu, Riitta Olsbo