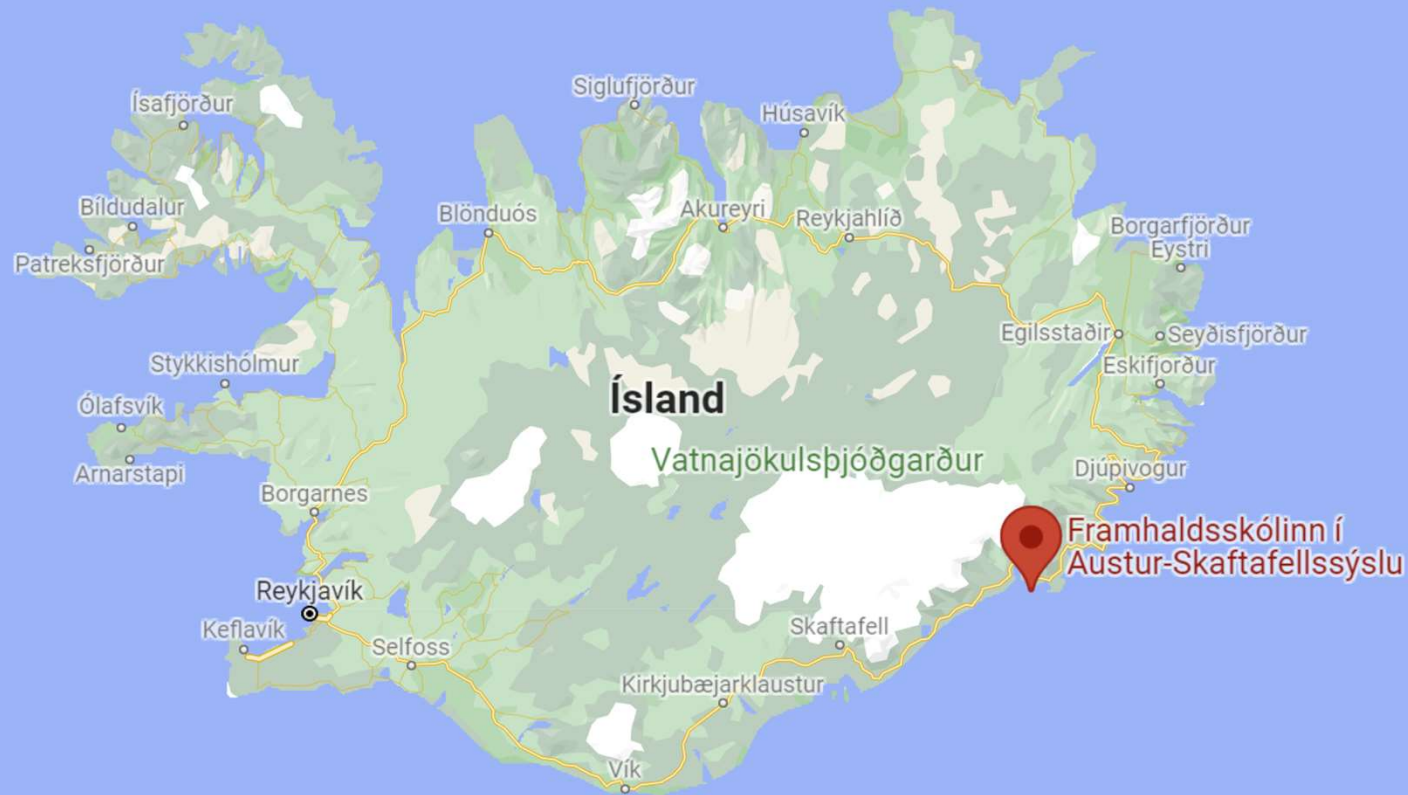


Welcome to FAS



FAS is a
secondary
school
in Iceland



- The school is located in the town Höfn in the county of Austur Skaftafellssýsla.

History of the school

- *The school was founded in 1987 and was first in a school building 7 km away from Höfn*
- *2002 the school moved to Höfn in the building Nýheimar (New World)*



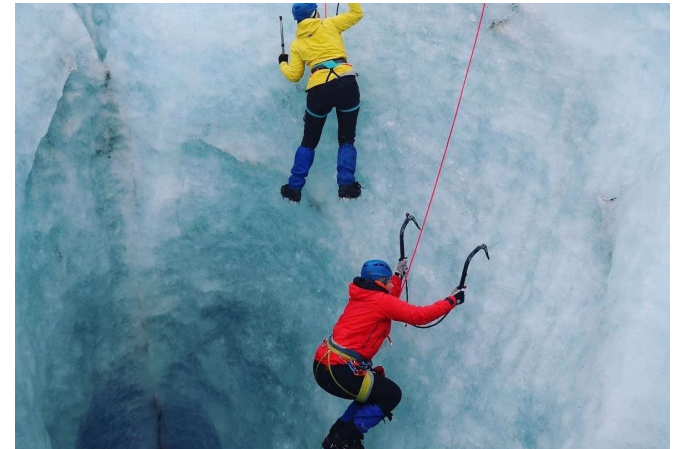
Standard courses of FAS

- The **Natural science** is learning about physics, chemistry, biology etc.
- The **Humanities and Social Sciences** is learning about sociology, philosophy, psychology etc.
- **Elective program** is for students who want to learn things like art, sports, etc.
- **Engineering studies** is about working with machines 750 Kw or less.



Other Courses of FAS

- **Mountaineering study:**
 - mountaineering
 - cliff and glacier climbing
 - cycling
 - canoeing
 - first aid, , etc.
- **Horse training study:**
 - is about training of horses
 - ownership of horses
 - running a horse farm and working with tourism



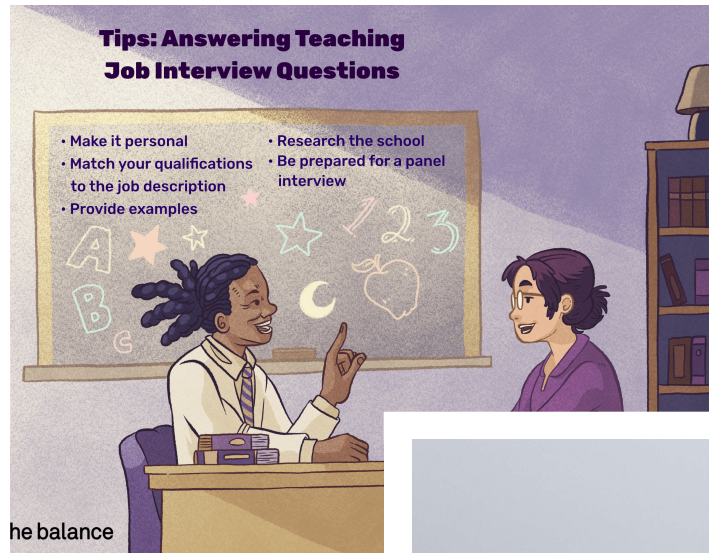
There are about 200 student in FAS

- There are 60 students that attend class regularly
- The rest are students that attend irregularly or are distance learners.



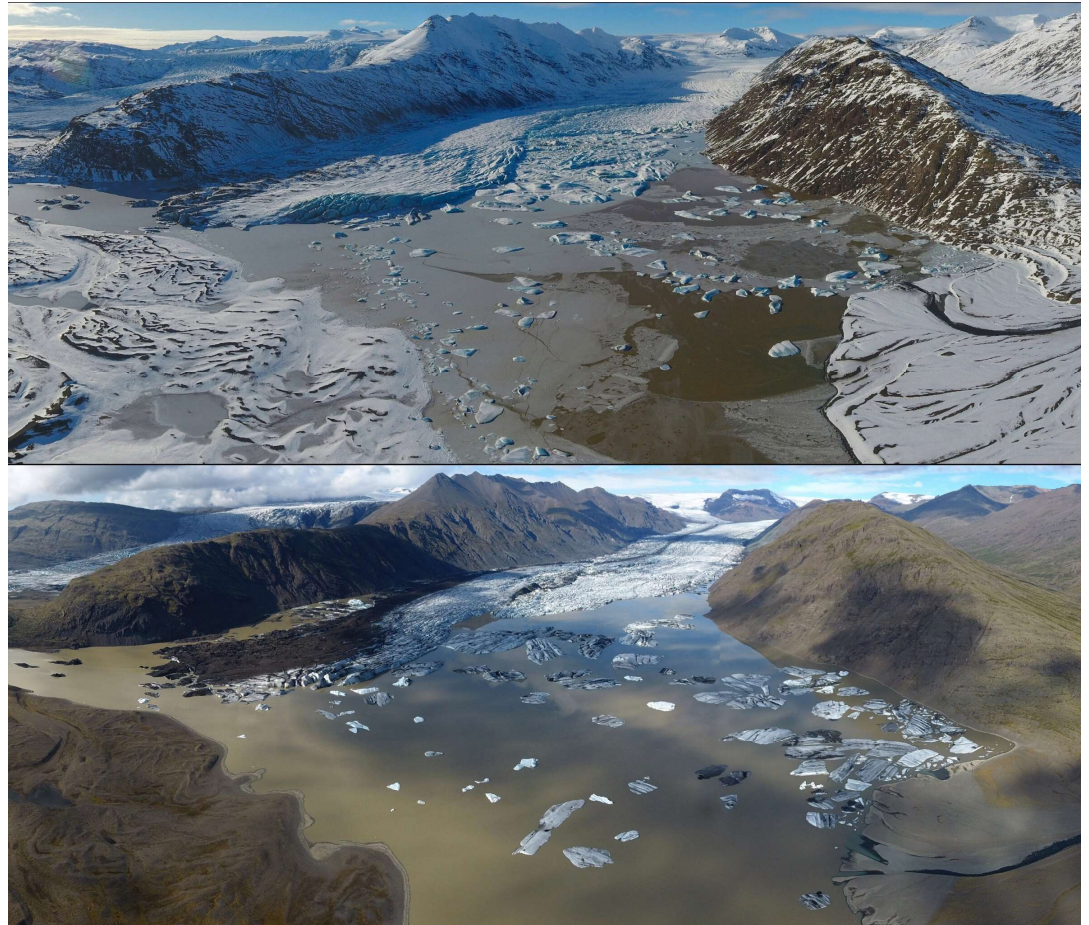
What makes FAS special

- A final interview with a teacher instead of a written final exam
- Many different surveys about nature.
- A portfolio for each class



The nature surveys

- We measure a specific grid of trees and count them in the sand Skeiðarássandur
- We estimated the melting of two outlets from glacier Vatnajökull
- In FAS we also have a survey where we count birds and bird species.



Social life

- The social life in the school is very good because most of the people know each other.
- There are many clubs and many club events.
- we have annual festival



Thank you for
your time

