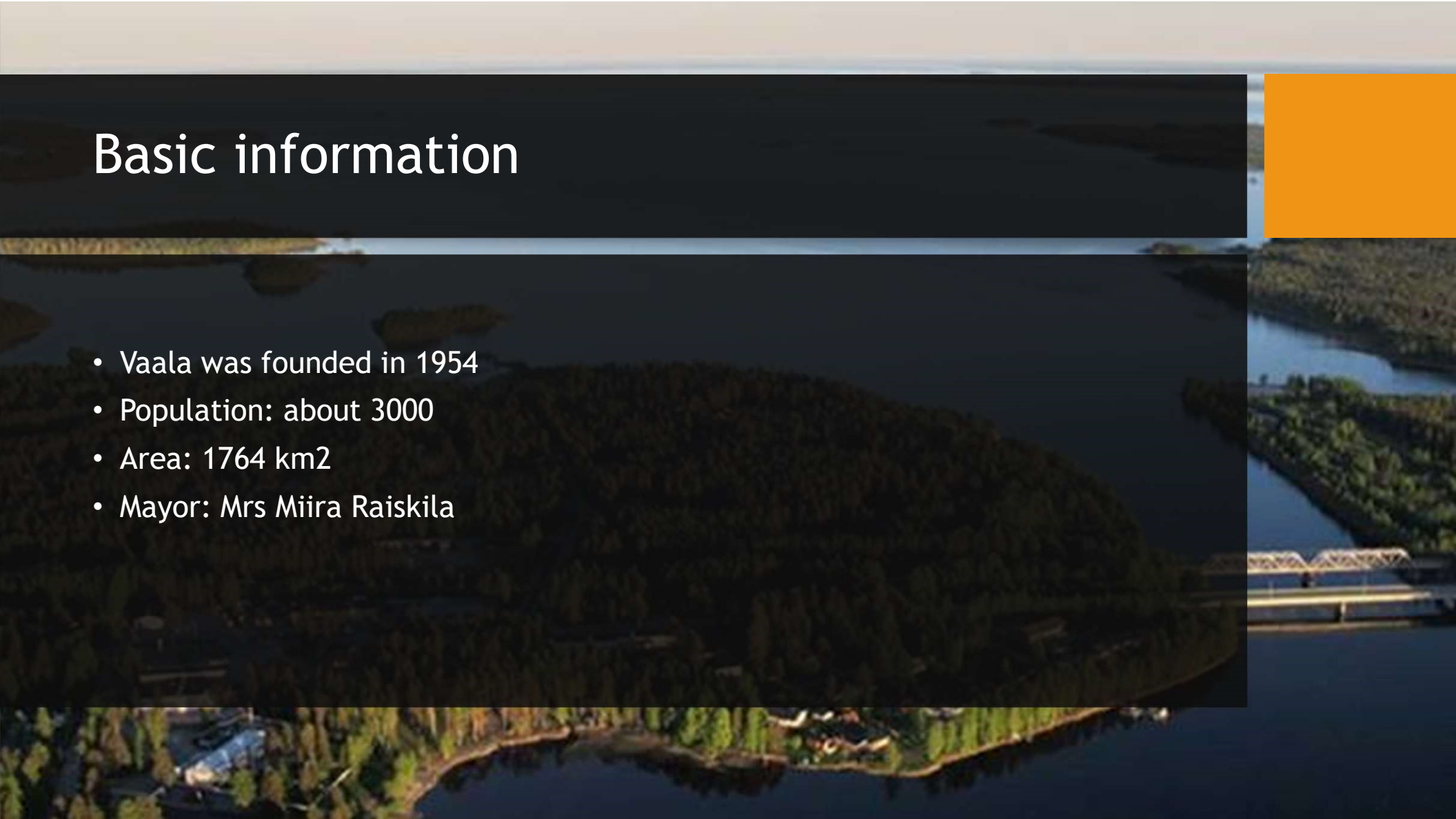


Vaala  
municipality



# Basic information

- Vaala was founded in 1954
- Population: about 3000
- Area: 1764 km<sup>2</sup>
- Mayor: Mrs Miira Raiskila





# Geography

- Vaala is located in the middle of Finland
- Neighbouring municipalities:  
Kajaani, Paltamo, Muhos, Puolanka,  
Utajärvi, Liminka, Siikalatva



# Jobs

The biggest employers:

- Pelso prison
- Vaala municipality
- Vaalan juustola (cheese factory)

Primary industries:

- Farming
- Services



Picture: Vaalan juustola



## Activities

- There are many activities you can practice in Vaala
- There is a good running track, a football field and amazing ski trails.
- You can also do outdoor winter swimming





# Sights

- Lamminaho Farm
- Säräisniemi church
- Manamansalo monumental church
- Säräisniemi museum



# Manamansalo monument church

- Manamansalo island on Lake Oulujärvi

- Picture: Kainuun Sanomat







Lamminaho farm





Pelso prison





Säräisniemi church





Sahanranta beach



Made by

Annukka Leinonen

Niko-Petteri Nousiainen

